

VOL
01



DOWNLOAD PDF



virnicahouse@yahoo.com

Follow On :



INTRODUCING



TRANSFORM A SURFACE ENHANCED WITH AN EDGE BAND SO THAT A SURFACE ENHANCED WITH AN EDGE BAND



PAPERMINT EDGE BAND

Transform the ordinary into extraordinary
with our premium edge bands



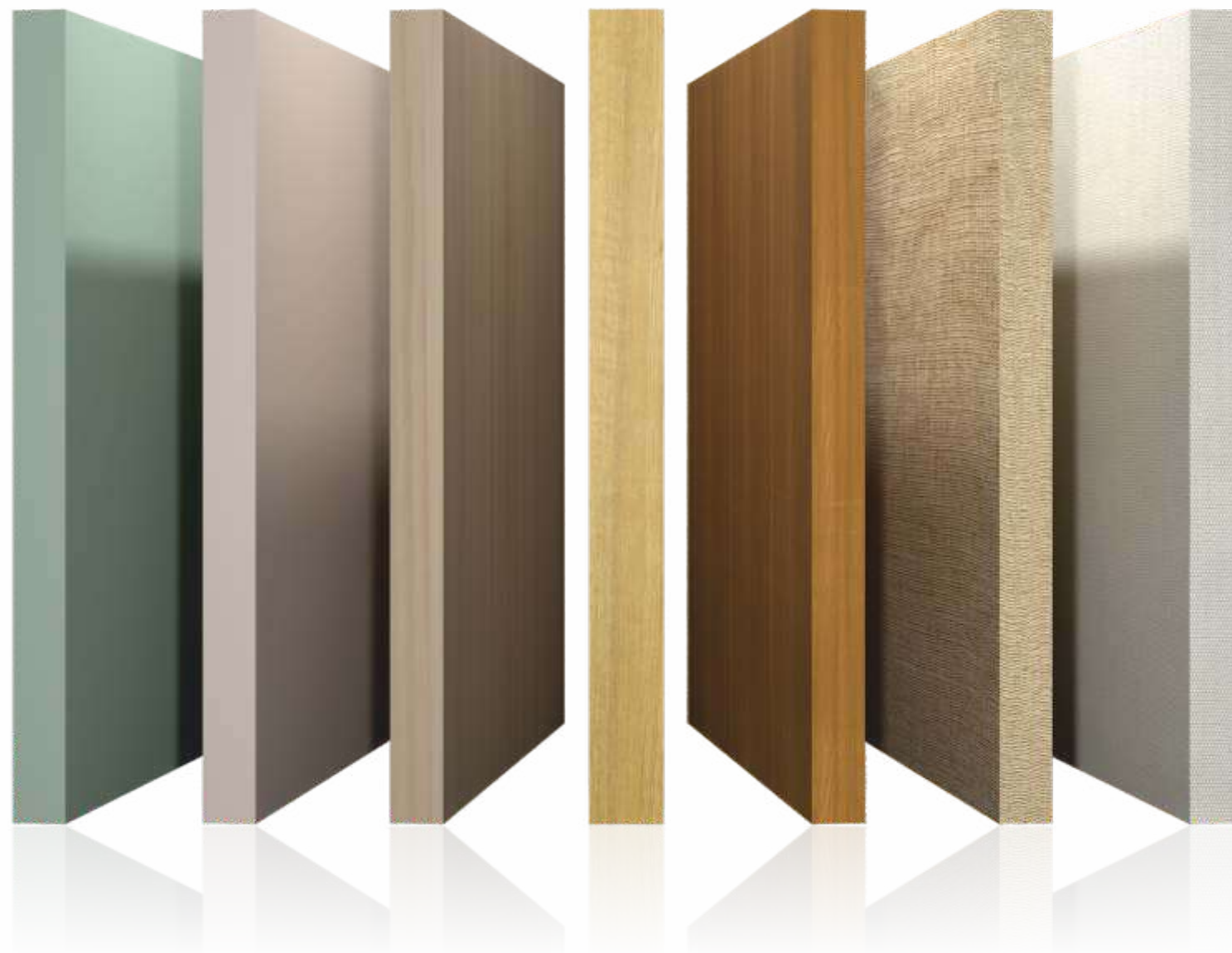
ABOUT

US

Papermint.

Laminates is a leading provider of high quality surfacing solutions renowned for our innovative designs and durable products. With a commitment to excellence our company strives to enhance interiors with a wide range of stylish and versatile laminates suitable for residential and commercial applications. We prioritize customer satisfaction through superior craftsmanship cutting edge technology and eco friendly practices ensuring that our products meet the highest standards of performance and aesthetics. Sunflower Laminates takes pride in our dedication to meeting the diverse needs of our clients offering a comprehensive selection of patterns textures and finishes to inspire creativity and elevate interior spaces. As a trusted industry leader we continue to push the boundaries of design and functionality empowering our customers to bring their visions to life with confidence and style.

Papermint EDGE BAND



SOLID - WOODEN - FABRIC

Papermint edgebanding is an excellent choice for laminates, offering several key benefits:

01. Aesthetic Appeal

Papermint edgebanding comes in a variety of colors and patterns, allowing for a perfect match with laminate surfaces, enhancing the overall look of the furniture.

02. Smooth Finish

It provides a seamless and smooth edge finish, which elevates the quality and appearance of the furniture.

03. Cost-Effective

Papermint edgebanding is a budget-friendly option that delivers a high-end look without the high-end cost

04. Easy Application

It is relatively easy to apply, making it a convenient option for both professionals and DIY enthusiasts.

05. Durability

Despite being paper-based, Papermint edgebanding is treated to resist wear and tear, ensuring longevity and maintaining its appearance over time.

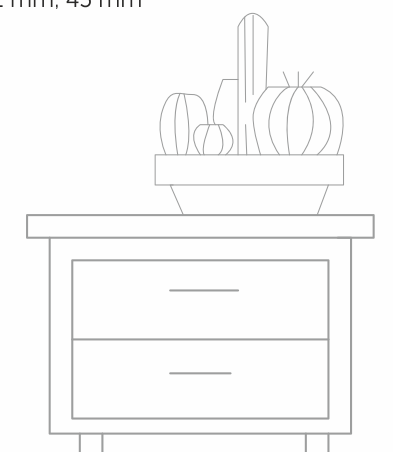
Choosing Papermint edge banding for laminates ensures a refined and durable finish, making your furniture both beautiful and practical.

FEATURES

- Easy to Install
- Soft Edge
- World class quality
- Nail free
- Cost effective
- Best Match
- UV Layer coating
- Made in India
- Termite Proof
- 100% recyclable

SPECIFICATION

Thickness : 0.8 mm
Roll Size : 50 Mtr
Available Width : 22 mm, 45 mm



Introducing ROYAL SUEDE FINISH

The Royal Suede finish provides a luxurious, soft, and velvety texture that adds an elegant touch to any piece of furniture. Its matte finish reduces glare, creating an understated yet sophisticated look. Despite its delicate appearance, the Royal Suede finish is durable and resistant to everyday wear and tear, ensuring long-lasting beauty. It complements a variety of design styles, making it a versatile choice for different furniture and decor. Additionally, it is easy to clean and maintain, ensuring your furniture remains pristine with minimal effort.



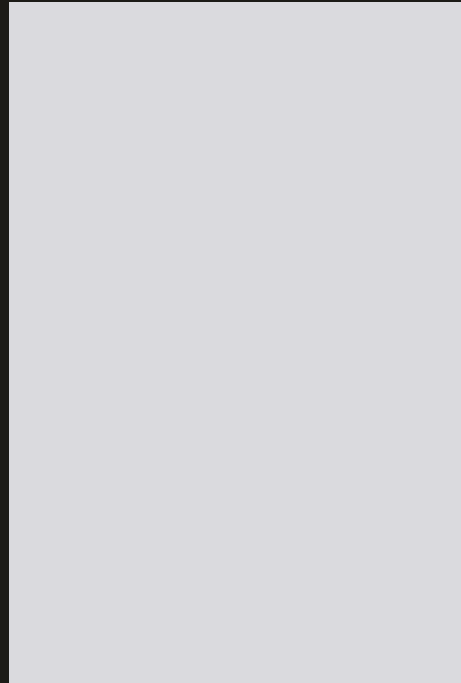
DISCOVER ROYAL
SUEDE FINISH



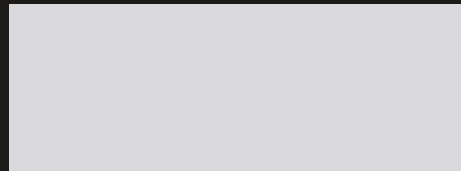
Beautiful SOLIDS

Beautiful solid finishes provide an elegant, timeless look that highlights furniture design and craftsmanship. They blend seamlessly with various styles, making coordination with other decor elements easy. This versatile choice ensures a refined and lasting appeal.





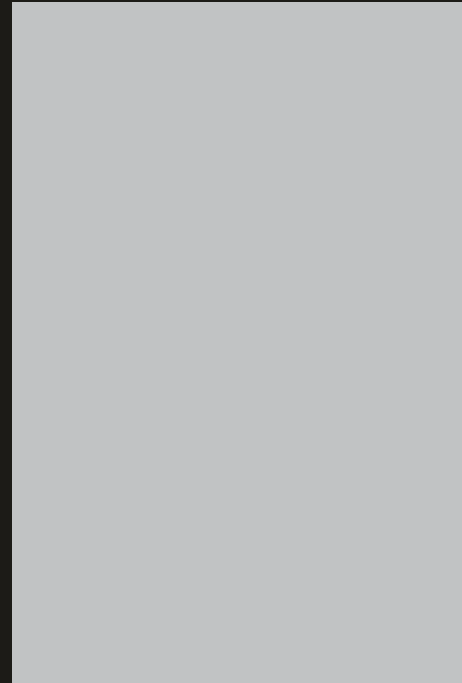
211 RSF



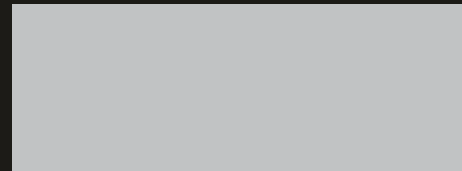
EB 211 RSF

Smoke Grey

Smoke grey is a versatile and sophisticated color that blends the neutrality of grey with a subtle, warm undertone. smoke grey is often used for walls, furniture, and flooring creating a elegant.



212 RSF



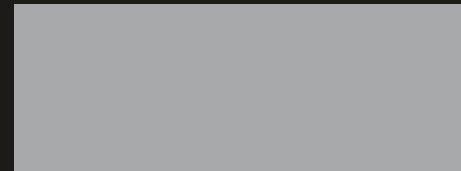
EB 212 RSF

Glitone

In fashion, Glitone is a timeless choice, adding a touch of refinement to clothing and accessories. ensuring it remains a popular choice for those seeking a balanced and stylish look.



213 RSF



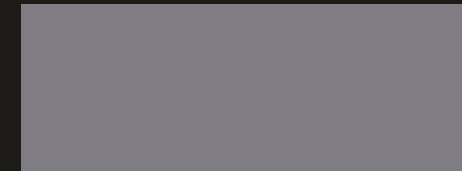
EB 213 RSF

Morning Grey

Morning Grey is a timeless and versatile color that sits perfectly between black and white, offering a balance of sophistication and neutrality. It is widely favoured in interior design for its ability crate.



214 RSF



EB 214 RSF

Graphito

Graphito's adaptability allows it to complement a range of color palettes, from bold and bright hues to other neutrals, making it a cornerstone in both contemporary dark stylish and classic decor.



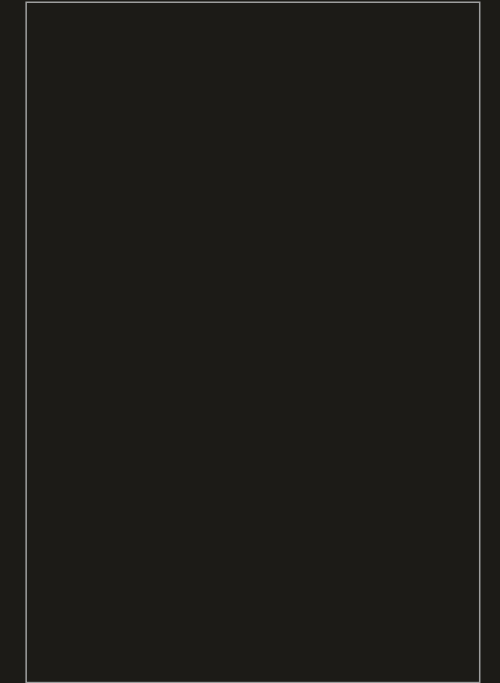
215 RSF



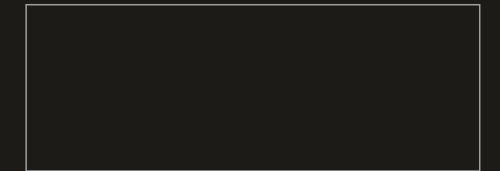
EB 215 RSF

Charcoal Grey

Charcoal grey is a deep, rich shade of grey that exudes elegance and sophistication. This color, darker than standard grey, offers a striking yet neutral backdrop that is both bold and versatile.



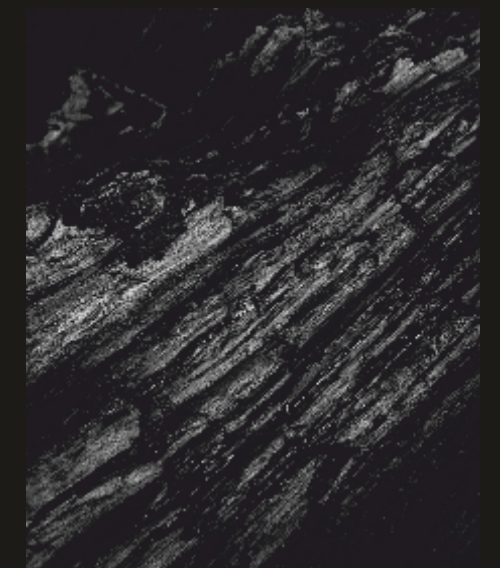
216 RSF

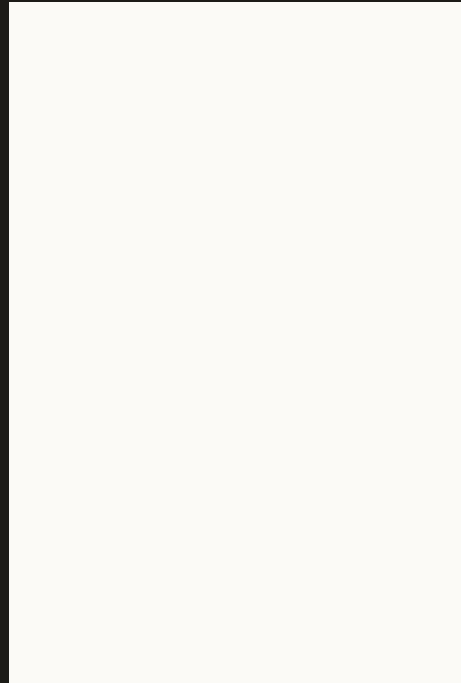


EB 216 RSF

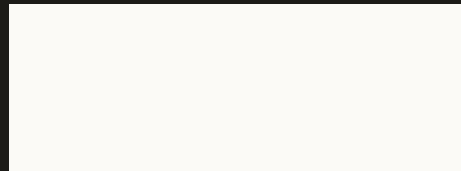
Jet Black

Jade black's alluring depth and unique undertones make it a standout choice for those seeking to infuse their spaces or wardrobes with a blend of classic elegance and modern intrigue.





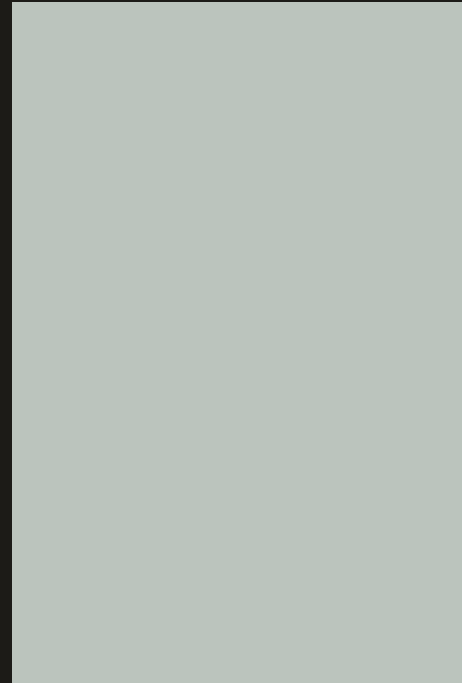
217 RSF



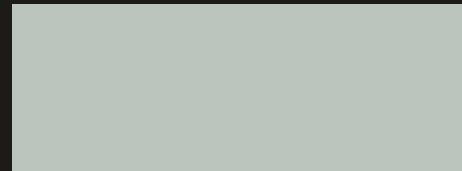
EB 217 RSF

Frosty White

Frosty white is a crisp, clean shade of white that evokes a sense of purity and freshness. which give it a slightly icy appearance, making it an ideal choice for creating bright shade and airy spaces.



218 RSF



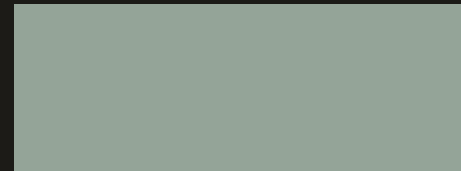
EB 218 RSF

Soft Spring

This delicate hue is both soothing and invigorating, making it an excellent choice for a variety of design and fashion applications. In interior design, Soft Spring can be used to create serene subtle tone .



219 RSF



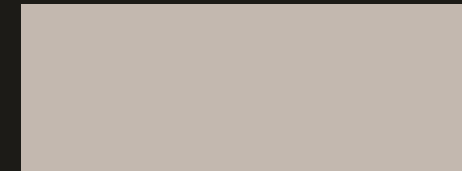
EB 219 RSF

Opel Green

Muted shade of green that evokes the serene beauty of a gentle stream. This color, reminiscent of calm waters and lush greenery, is perfect for creating peaceful and Opel Green refreshing spaces.



220 RSF



EB 220 RSF

Light Beige

Beige is a warm, creamy shade of beige that exudes comfort and sophistication, reminiscent of the beloved coffee drink it is named after This versatile color strikes a perfect balance between neutral.



221 RSF



EB 221 RSF

Flamingo

A refined create a warm, earthy tone. makes it a popular choice in both interior design and fashion, offering a refined and neutral backdrop that complements a wide range of colors shade.



222 RSF

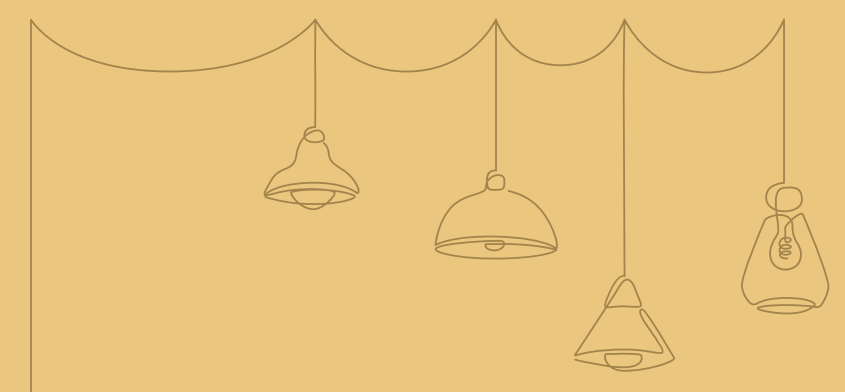


EB 222 RSF

Brown Fade

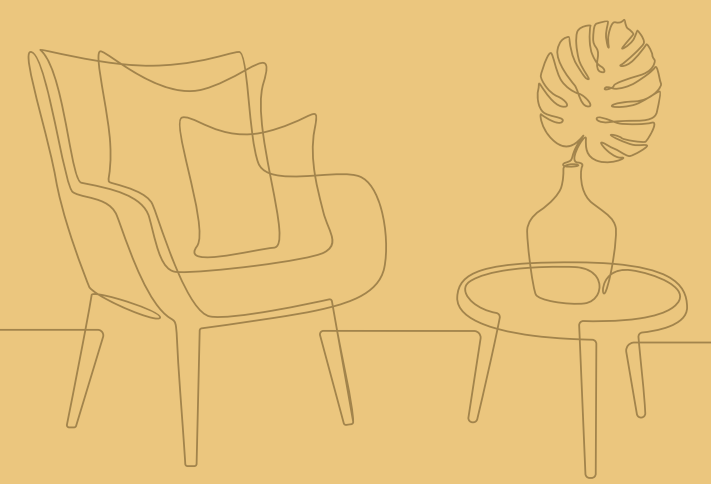
This shade blends subtle tones of beige and light brown, creating a soft, inviting appearance that evokes a sense of comfort and desire simplicity. allowing for a harmonious and balanced design.





**papermint**TM
LAMINATES

Classic
WOODS



Elevate your space with Classic Wood Laminate. Enjoy the timeless beauty and durability of wood in an easy-to-apply laminate. Perfect for residential and commercial projects.



ELEVATE YOUR ENVIRONMENT,
ENHANCE YOUR LIFESTYLE



311 RSF



EB 311 RSF

White Oak

This type of laminate mimics the appearance of natural oak wood, featuring its characteristic grain patterns and warm tones, Oak laminate is a popular and practical choice for flooring and surfaces.



312 RSF



EB 312 RSF

Burma Teak

Burma teak laminate offers the luxurious look of natural teak with the added benefits of laminate technology. The texture and visual appeal of real teak, bringing a touch of sophistication.



313 RSF



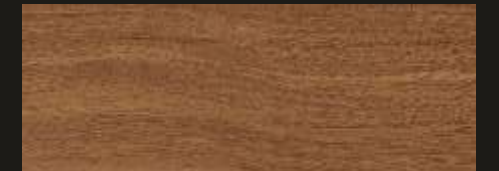
EB 313 RSF

Danish Teak

Danish teak laminate is easy to maintain, offering a hassle-free alternative to real wood. Its rich color and texture contribute to a warm seeking an elegant and long-lasting surface solution.



314 RSF



EB 314 RSF

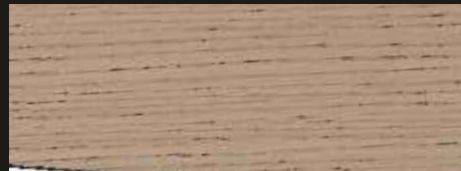
Honey Maple

A versatile and attractive choice for furniture and surfaces that emulates the warm, inviting look of natural maple wood. Featuring rich, golden-brown tones with subtle grain patterns laminate.





315 RSF



EB 315 RSF

Whitemist

Frosty white paint or decor can create a clean, crisp, and serene atmosphere in a room. It's often used in minimalist or modern designs to enhance the sense of space and light.



316 RSF



EB 316 RSF

Freshno

Its ability to enhance any decor style with a natural, timeless appeal makes it a popular option for those seeking both beauty and functionality in their surfaces. the practical benefits of laminate



317 RSF



EB 317 RSF

Sublime Teak

This laminate replicates the luxurious appearance of genuine teak, making it a stylish choice for various design applications. offers an elegant and contemporary look while advantages of laminate.



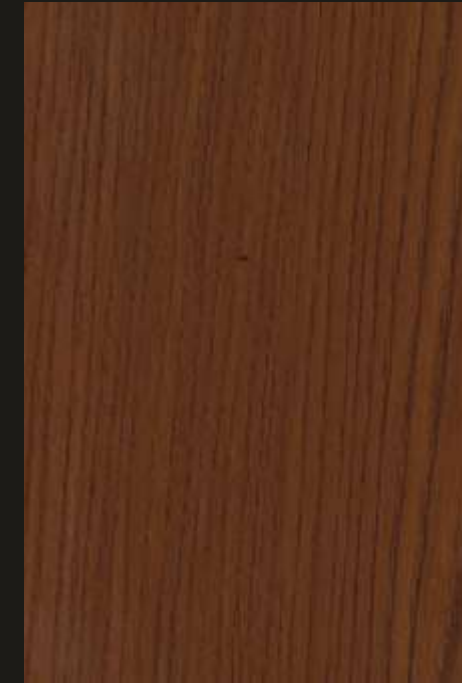
318 RSF



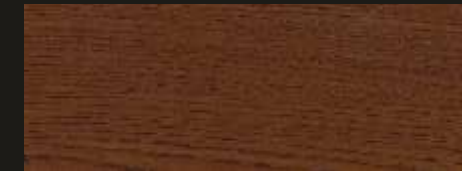
EB 318 RSF

Candle Light

Featuring gentle, reddist hues with a hint of warmth, this laminate adds a cozy and refined touch to any space. Its delicate, glowing appearance creates a serene atmosphere classy charm.



319 RSF



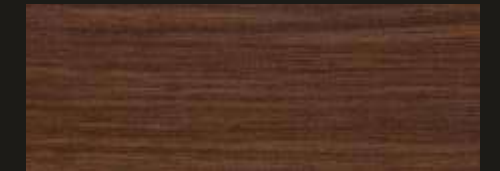
EB 319 RSF

American Walnut

American walnut laminate is a sophisticated and stylish surface option that replicates the rich, deep tones and distinctive grain patterns of natural walnut wood. Known for its dark,



320 RSF



EB 320 RSF

Spiced Walnut

Offering both aesthetic appeal and functionality. Its ability to enhance spaces with a warm and stylish look makes it a popular choice for those seeking a blend of beauty and durability & design.

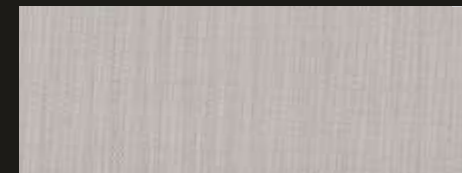


Touch FABRICS

Elevate your space with Touch Fabric Laminate, blending fabric's elegance with laminate's durability. Ideal for any project, available in various colors.



511 RSF



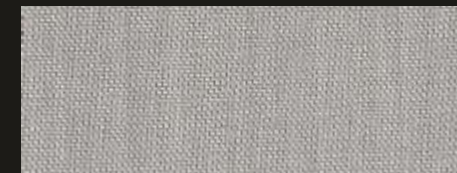
EB 511 RSF

Canvas Bright

the look and texture of canvas fabric while offering the durability and ease of maintenance associated with laminate technology. This laminate features a fabric-like texture pattern.



512 RSF



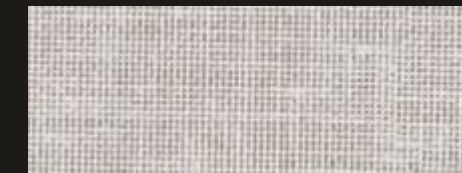
EB 512 RSF

Canvas Grey

Canvas grey fabric laminate is a sophisticated and contemporary surface option that combines the elegant texture of canvas fabric with a versatile grey hue, a wide range design styles applications.



513 RSF



EB 513 RSF

Linen

Linen fabric is used for cabinetry, counter-tops, and wall panels, offering a refined and tactile element that enhances the visual interest of a space. Its fabric-like texture adds depth sophistication.



514 RSF



EB 514 RSF

Jute

Jute fabric grey laminate is easy to clean and maintain, offering a practical alternative to real fabric while maintaining a chic and modern aesthetic. element that the visual interest of a space.





515 RSF



EB 515 RSF

Cotton Wool

This laminate features a fabric like surface with a texture that mimics the soft, warm feel of real wool, offering a sophisticated and tactile element to various design to make cool applications.



516 RSF



EB 516 RSF

Ivory Fabric

Featuring a design that mimics the look and feel of fabric, Ivory fabric laminate offers a unique aesthetic with a soft, tactile quality. Its color palette often includes subtle, neutral tones that enhance.



517 RSF



EB 517 RSF

Dark Fabric

This makes it suitable for high-traffic areas and frequently used surfaces. Additionally, dark fabric laminate is easy to clean and maintain, offering a practical solution that combines aesthetic.



518 RSF



EB 518 RSF

Brushed Cotton

Cotton fabric laminate refers to a type of material made by bonding cotton fabric with a layer of plastic or resin. This process enhances the durability, while maintaining its natural texture and breath ability.



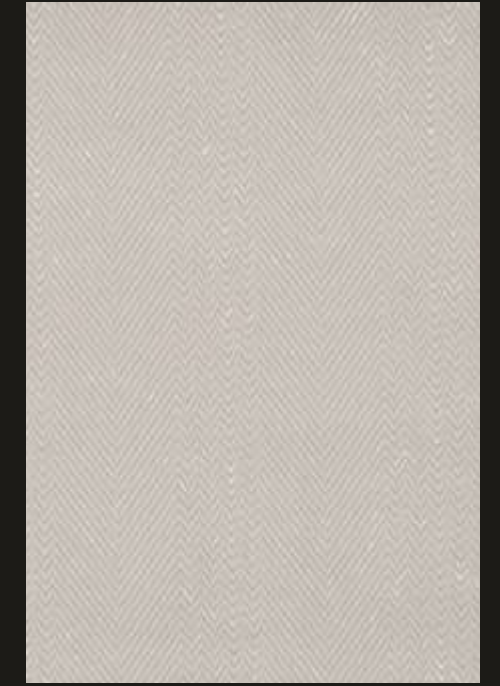
519 RSF



EB 519 RSF

Tweed

Tweed fabric laminate is a sophisticated material created by applying a protective laminate layer over traditional tweed fabric. Tweed, known for its classic texture and warmth.



520 RSF



EB 520 RSF

Batik

known for its intricate patterns and vibrant colors. When batik fabric is laminated, traditional artistry that the thin layer of plastic or resin is applied, enhancing the fabric's durability.



D. NO.	FINISH	DESIGN NAME	EDGE BAND CODE	P. NO.	QR
211	RSF	SMOKE GREY	EB 211 RSF	9	
212	RSF	GLITONE	EB 212 RSF	9	
213	RSF	MORNING GREY	EB 213 RSF	9	
214	RSF	GRAPHITO	EB 214 RSF	10	
215	RSF	CHARCOAL GREY	EB 215 RSF	10	
216	RSF	JET BLACK	EB 216 RSF	10	
217	RSF	FROSTY WHITE	EB 217 RSF	11	
218	RSF	SOFT SPRING	EB 218 RSF	11	
219	RSF	OPEL GREEN	EB 219 RSF	11	
220	RSF	LIGHT BEIGE	EB 220 RSF	12	
221	RSF	FLAMINGO	EB 221 RSF	12	
222	RSF	BROWN FADE	EB 222 RSF	12	
311	RSF	WHITE OAK	EB 311 RSF	15	
312	RSF	BURMA TEAK	EB 312 RSF	16	
313	RSF	DANISH TEAK	EB 313 RSF	16	
314	RSF	HONEY MAPLE	EB 314 RSF	16	

D. NO.	FINISH	DESIGN NAME	EDGE BAND CODE	P. NO.	QR
315	RSF	WHITEMIST	EB 315 RSF	17	
316	RSF	FRESHNO	EB 316 RSF	17	
317	RSF	SUBLIME TEAK	EB 317 RSF	17	
318	RSF	CANDLE LIGHT	EB 318 RSF	18	
319	RSF	AMERICAN WALNUT	EB 319 RSF	18	
320	RSF	SPICED WALNUT	EB 320 RSF	18	
511	RSF	CANVAS BRIGHT	EB 511 RSF	19	
512	RSF	CANVAS GREY	EB 512 RSF	20	
513	RSF	LINEN	EB 513 RSF	20	
514	RSF	JUTE	EB 514 RSF	20	
515	RSF	COTTON WOOL	EB 515 RSF	21	
516	RSF	IVORY FABRIC	EB 516 RSF	21	
517	RSF	DARK FABRIC	EB 517 RSF	21	
518	RSF	BRUSHED COTTON	EB 518 RSF	22	
519	RSF	TWEED	EB 519 RSF	22	
520	RSF	BATIK	EB 520 RSF	22	

PROPERTIES	SPECIFIED VALUE AS PER IS : 2046-1995	PAPERMINT CONFIRM
Thickness	0.8mm (±10%)	✓
Resistance to Surface Wear	350 (revolution)	✓
Resistance to immersion in boiling water		
-Mass Increase (%)	10.0 Max.	✓
-Thickness Increase (%)	11.8 Max.	✓
Resistance to dry heat 180°C	Not worse than 4	✓
Dimensional stability at deviated temperature		
-Longitudinal (%)	0.5 Max	✓
-Transverse (%)	0.9 Max.	✓
Dimensional stability at 20°C		
-Longitudinal (%)	0.357 Max.	✓
-Transverse (%)	0.60 Max.	✓
Resistance to impact by small diameter ball	20N Min.	✓
Resistance to cracking	Not worse than 4	✓
Resistance to stretching	2N Min.	✓
Resistance to staining	Not worse than 5	✓
Resistance to colour change (wool standards)		
-In Xenon arc light	Not worse than 6	✓
-In enclosed Carbon arc light	Not worse than 5	✓
Resistance to cigarette burns	Not worse than 3	✓
Resistance to steam	Not worse than 4	✓
Appearance	Should be free from foreign particles	✓

PRODUCT :
High pressure decorative laminated sheets

SIZE :
2440mm x 1220mm (8'x4')

CARE & MAINTENANCE :
Cleaning should be carried out with a soft moist cloth and warm soap solution. Do use detergents containing abrasive particles or excess soda.

PRODUCT CONFORMITY TO :
British european standard-bs en 438, american nema id-3, bis (bureau of Indian standard) is-2046.

NOTE :
1. Sample presented are indicative of colour, pattern and surface finish but not of actual thickness. High gloss sheets are recommended for vertical application only.
2. Finishes other than shown in here are available on request.

LIMITED WARRANTY :
Papermint warrants that its products are reasonably free from manufacturing defects. The products when properly used, will comply. With normal deviations, to related manufacturing specification. This warranty shall be limited only to the original buyer for a period of one (1) year from the date of dispatch by Lamilaxe. It excludes damage resulting from accidents, abuse or lake of care, improper use and and/or any alternation, It is recommended that the product must be inspected prior to installation and our liability will be limited to the extent of the cost of the product only. Lamilaxe laminates are used for various applications, without the possibility of control over the manufacturing of the finished product. The company does not assume obligations or liabilities arising from the furnishing, sale, installation or repair use subsequent sale of any product. to any person or entity.

APPLICATION AREA

